

**DYBLES**



## **Flat 29, Lions Hall St. Swithun Street, Winchester – SO23 9HW**

**£230,000 Leasehold**

Centrally Located Two Bedroom Retirement Apartment in Winchester  
Council Tax band: D

Tenure: Leasehold

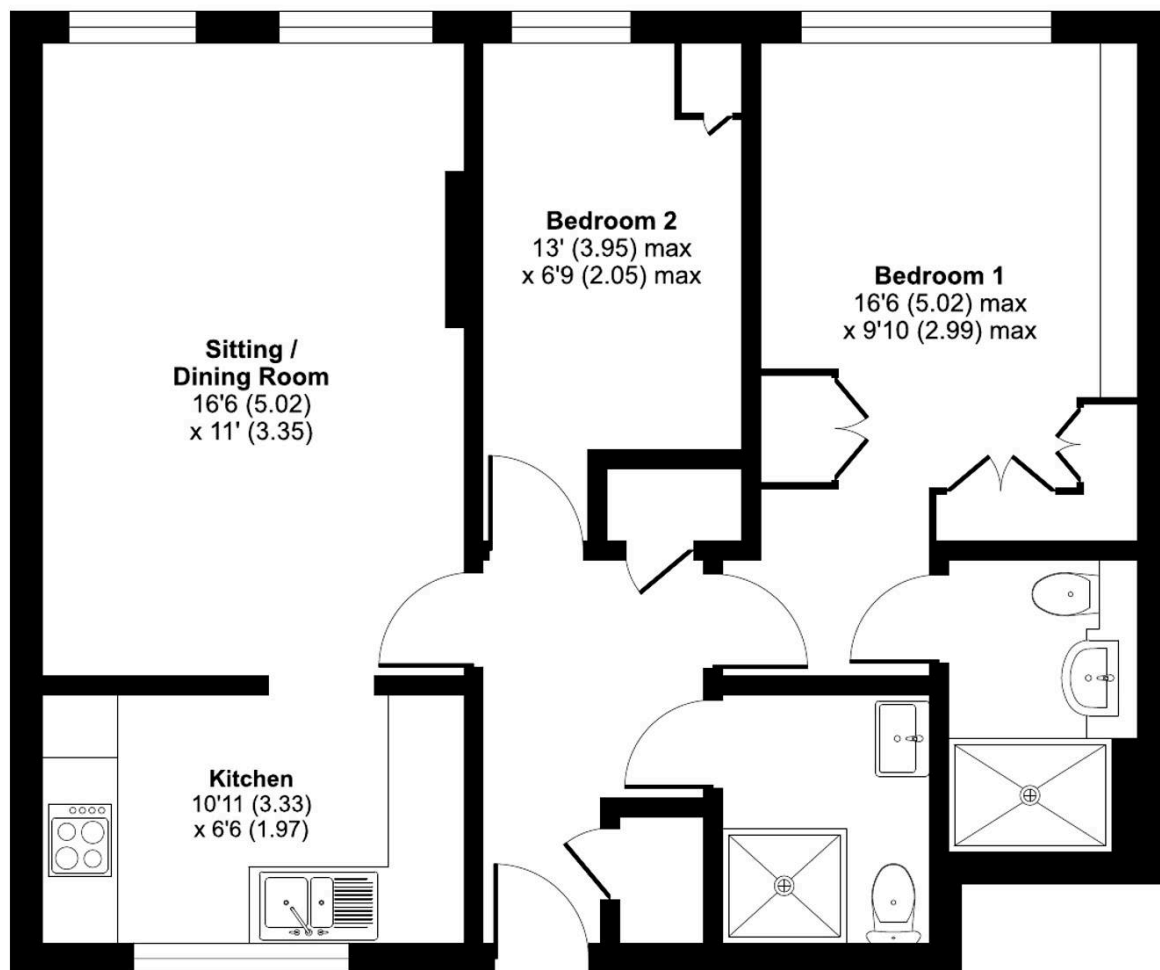
EPC Energy Efficiency Rating: C

EPC Environmental Impact Rating:

# Lions Hall, St. Swithun Street, Winchester, SO23

Approximate Area = 655 sq ft / 60.8 sq m

For identification only - Not to scale



**GROUND FLOOR**



Floor plan produced in accordance with RICS Property Measurement 2nd Edition, Incorporating International Property Measurement Standards (IPMS2 Residential). © n|checon 2025. Produced for Dybles. REF: 1359431