



Flat 6, Park Court Park Road, Winchester
Winchester

£285,000
DYBLES





Flat 6

Park Court Park Road, Winchester

Nestled in the highly sought-after area of Abbots Barton, this well-presented two-bedroom apartment offers an ideal blend of modern living and urban convenience. With the added benefit of a garage en bloc, this property represents a rare opportunity for those seeking both elegance and practicality in one of Winchester's most desirable residential locations.

The apartment boasts two generously sized bedrooms, providing ample space for rest and relaxation. A functional and well-appointed kitchen offers plenty of storage and workspace, while the modern family bathroom is designed for comfort and ease. The spacious lounge and dining area creates a welcoming environment for both everyday living and entertaining guests.

One of the standout features of the property is its south-facing balcony, which offers a wonderful spot to enjoy open views into Winchester's vibrant city centre. Whether you're sipping your morning coffee or unwinding in the evening, this private outdoor space is a true highlight.

The inclusion of a garage en bloc offers secure parking and additional storage—an increasingly rare advantage in such a central location. This practical feature adds real value, offering peace of mind to those looking for low-maintenance city living with added convenience.

Situated just a short walk from the city centre, residents benefit from close proximity to a wide array of amenities including shops, restaurants, and Winchester's mainline train station. The excellent

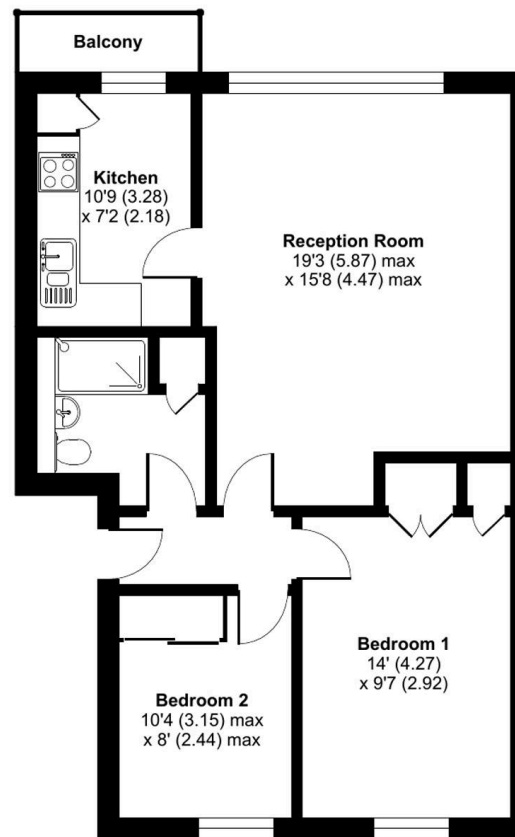
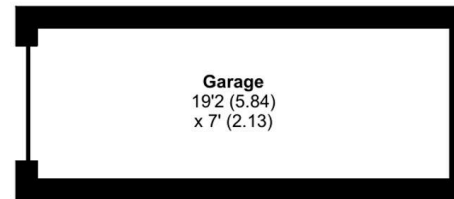
Park Road, Winchester, SO23

Approximate Area = 679 sq ft / 63.1 sq m

Garage = 134 sq ft / 12.4 sq m

Total = 813 sq ft / 75.5 sq m

For identification only - Not to scale



FIRST FLOOR



Dybles

Unit 4, Black Swan Buildings Southgate Street - SO23 9DT

01962 866644 • winchester@dybles.com • www.dybles.com