



5 Rozelle Close, Littleton
Winchester

In Excess of **£850,000**
DYBLES





5 Rozelle Close

Littleton, Winchester

Tenure: Freehold

Council Tax Band: E (2024/2025 £2,628.34 PA)

Utilities: Mains connected to Electric and Water,
Gas Heating and Individual Sewage Treatment Plant

Parking: Garage and Driveway

Council Tax band: E

Tenure: Freehold

Rozelle Close, Littleton, Winchester, SO22

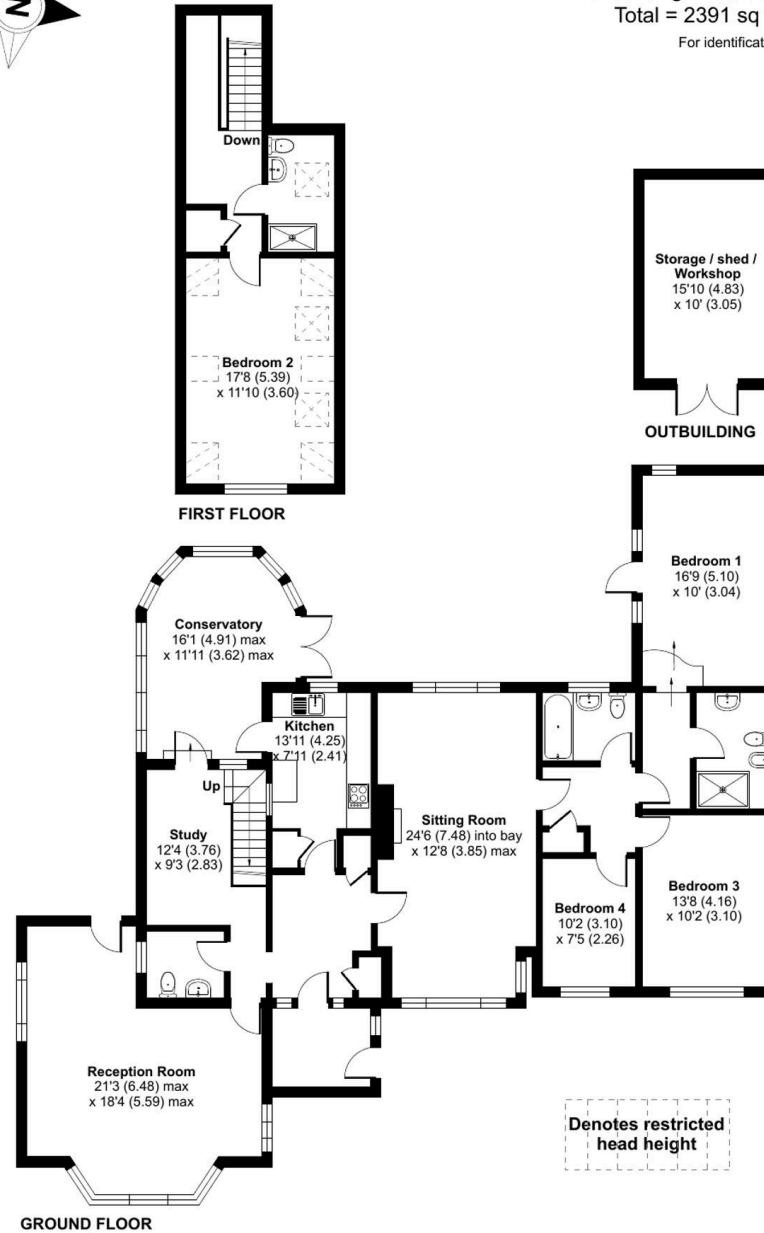
Approximate Area = 2189 sq ft / 203.3 sq m

Limited Use Area(s) = 43 sq ft / 3.9 sq m

Outbuilding = 159 sq ft / 14.7 sq m

Total = 2391 sq ft / 221.9 sq m

For identification only - Not to scale





Dybles

Unit 4, Black Swan Buildings Southgate Street - SO23 9DT

01962 866644 • winchester@dybles.com • www.dybles.com