



82 Berewecke Avenue, Winchester
Winchester

£550,000
DYBLES





82 Bereweke Avenue

Winchester, Winchester

Nestled in the sought-after area of Bereweke, this delightful 3 / 4-bedroom semi-detached property offers the perfect blend of comfort, style, and convenience. With easy access to local shops, reputable schools, and just a short cycle to Winchester Train Station, this home is ideally suited for a growing family.

Upon entering, you are welcomed by a bright and airy hallway, complete with a downstairs W/C and useful storage space. The ground floor features a thoughtfully connected living and dining area, highlighted by a charming bay window that fills the space with natural light. From here, step into the stunning garden room—a versatile space perfect for year-round enjoyment, offering seamless views of the garden.

The kitchen is a functional and modern haven, boasting ample storage and a sleek aesthetic, all while providing picturesque views of the landscaped garden. Additionally, the modern fitted Neff appliances add to the convenience and practicality of the space.

Ascending to the first floor, the property comprises three well-appointed bedrooms, including two generously sized doubles. A contemporary family bathroom serves this level, adding to the home's practicality. The serene ambiance continues to the beautifully converted loft, which houses a spacious fourth double bedroom—an ideal retreat or versatile space for growing needs. For convenience, the loft conversion benefits from the inclusion of a large amount of storage options, with ample boarded eaves storage which stretches the entire perimeter

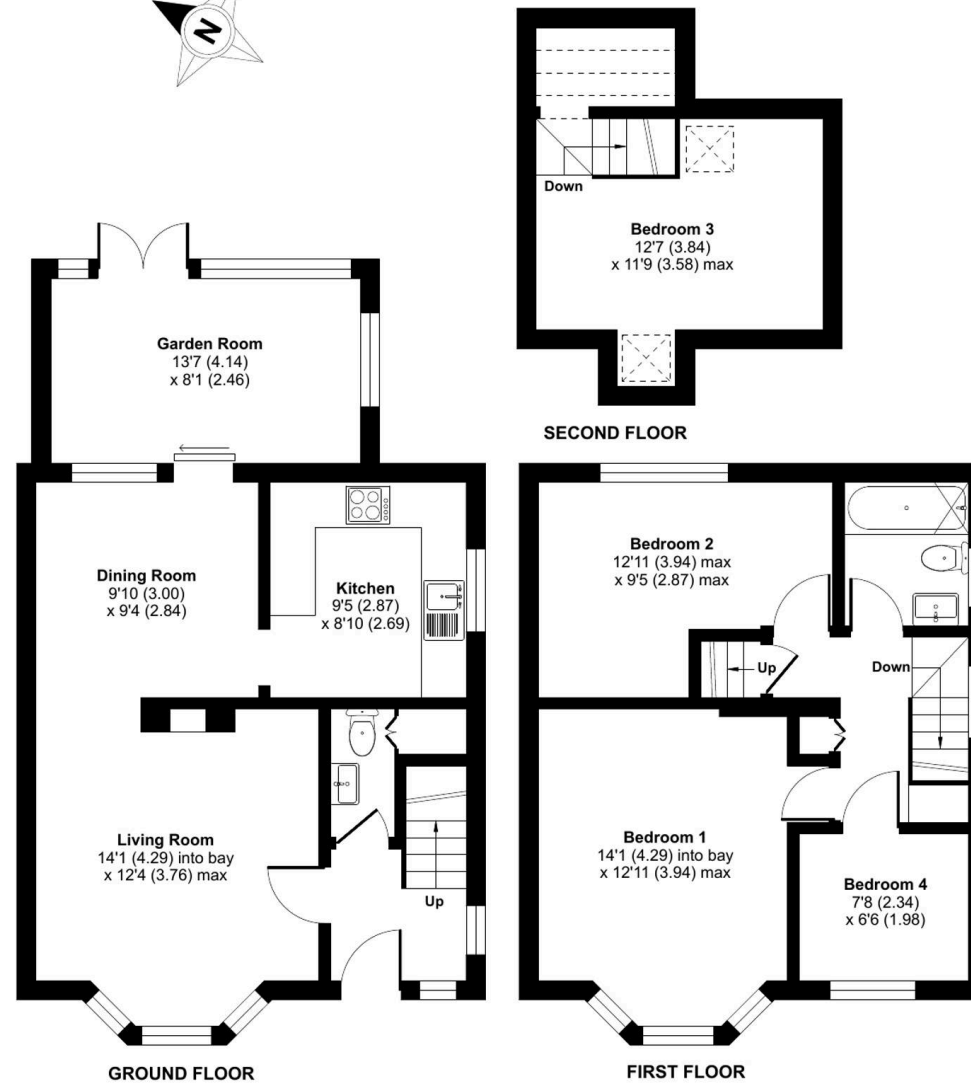
Berewecke Avenue, Winchester, SO22

Approximate Area = 1106 sq ft / 102.7 sq m

Limited Use Area(s) = 24 sq ft / 2.2 sq m

Total = 1130 sq ft / 104.9 sq m

For identification only - Not to scale





Dybles

Unit 4, Black Swan Buildings Southgate Street - SO23 9DT

01962 866644 • winchester@dybles.com • www.dybles.com