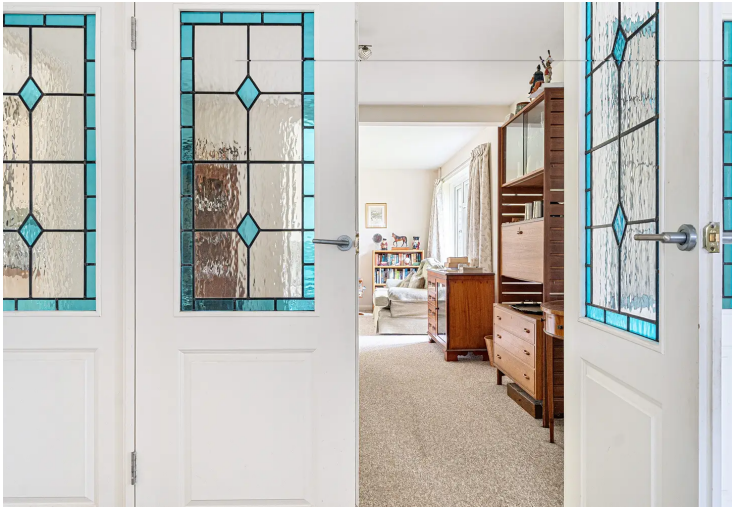


DYBLES



8 Lynch Close, Winchester – SO22 6DG

£675,000 Freehold

Three-bedroom detached bungalow in the highly sought-after location of Bereweek, Winchester.

Council Tax band: E

Tenure: Freehold

EPC Energy Efficiency Rating: D

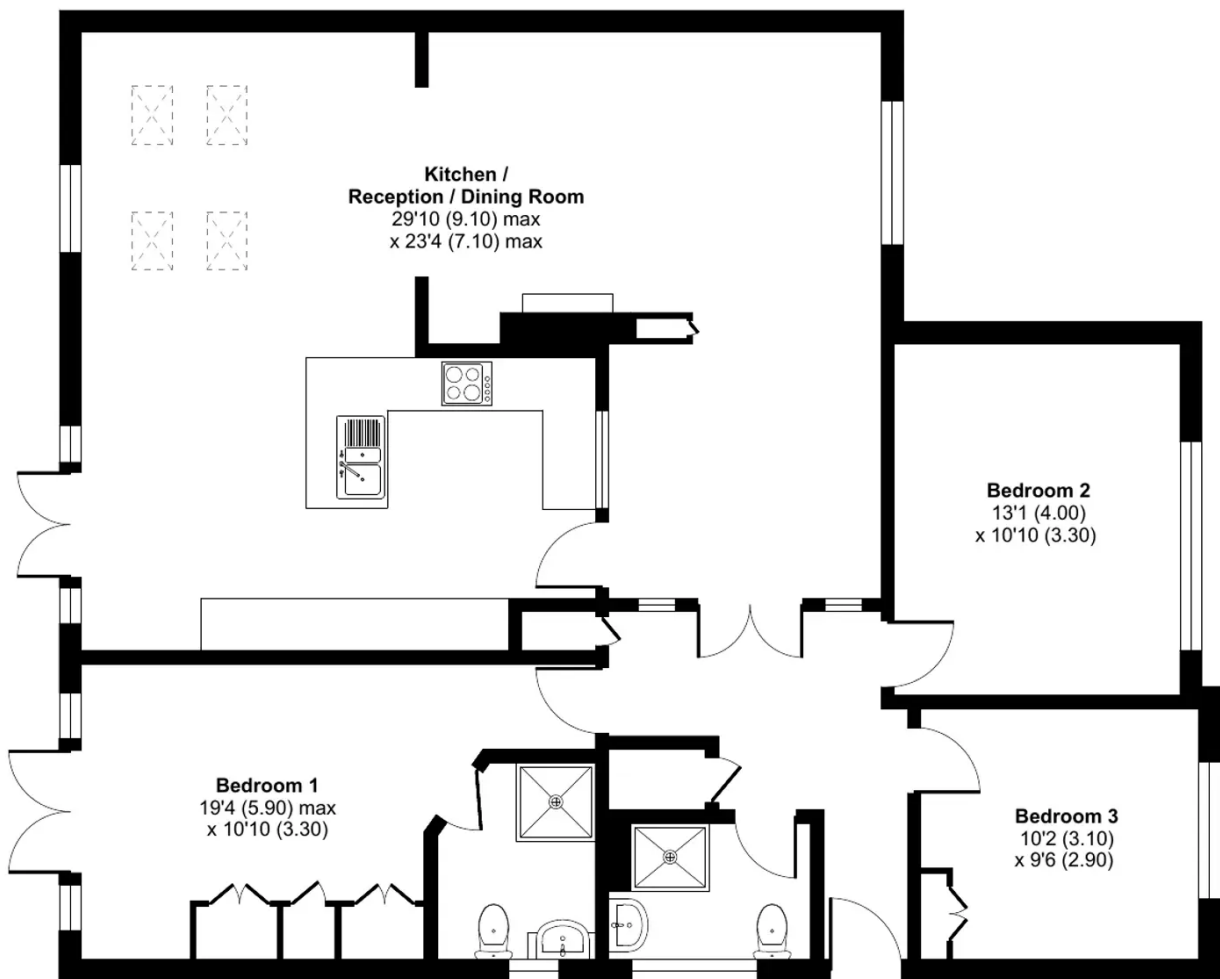
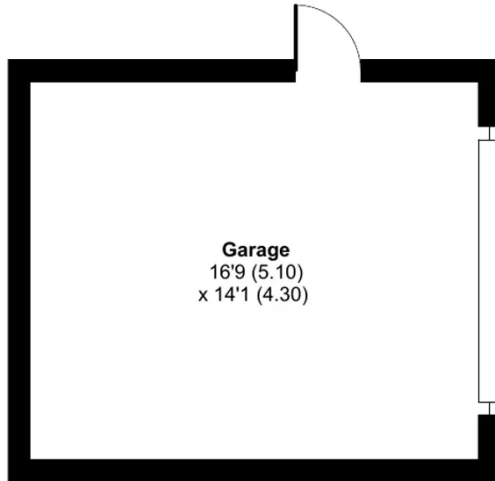
Lynch Close, Winchester, SO22

Approximate Area = 1296 sq ft / 120.4 sq m

Garage = 236 sq ft / 21.9 sq m

Total = 1532 sq ft / 142.3 sq m

For identification only - Not to scale



GROUND FLOOR



Floor plan produced in accordance with RICS Property Measurement Standards incorporating International Property Measurement Standards (IPMS2 Residential). © n̄checom 2024. Produced for Dybles. REF: 1130406