

DYBLES



Flat 11, Warwick Court Northlands Drive, Winchester – SO23 7AN

£285,000 Leasehold

Modern two bedroom apartment, located a short distance away from Winchester City Centre.

Council Tax band: C

Tenure: Leasehold

EPC Energy Efficiency Rating: D

EPC Environmental Impact Rating: D

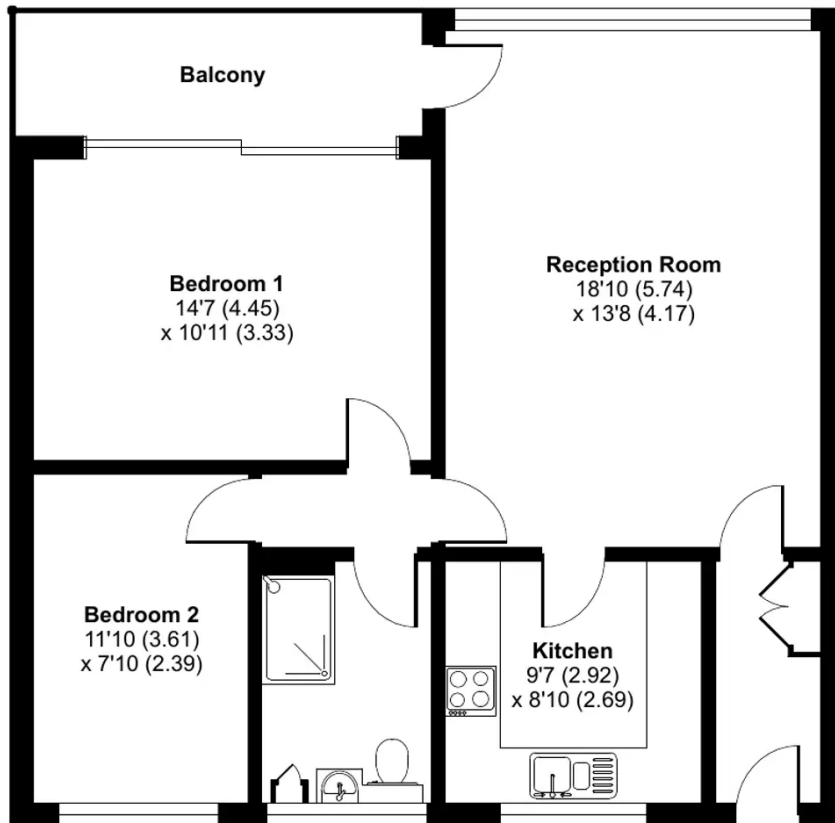
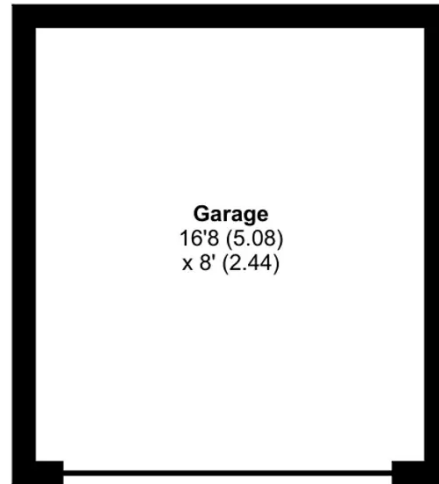
Northlands Drive, Winchester, SO23

Approximate Area = 737 sq ft / 68.5 sq m

Garage = 224 sq ft / 20.8 sq m

Total = 961 sq ft / 89.3 sq m

For identification only - Not to scale



FIRST FLOOR



Floor plan produced in accordance with RICS Property Measurement Standards incorporating International Property Measurement Standards (IPMS2 Residential). © n̄cheom 2024. Produced for Dybles. REF: 1088448