



10 Francis Copse, Colden Common
Winchester

Guide Price **£410,000**
DYBLES





10 Francis Copse

Colden Common, Winchester

Located in the desirable area of Francis Copse, Colden Common, this charming three-bedroom end of terrace home presents an ideal blend of modern comfort and convenience. Situated amidst a wealth of amenities including local schools, shops, transport links, and open green spaces, this property offers a coveted lifestyle for families and professionals alike.

Upon entry, guests are welcomed into a spacious entrance hall, featuring a convenient downstairs W/C, providing immediate practicality for everyday living. To the right lies a well presented kitchen/dining space, offering ample storage and a tasteful decorative finish.

Following from this is the heart of the home - the lounge/dining space. This generously proportioned area offers versatility, accommodating both casual gatherings and formal entertaining with ease, providing an ideal setting for diverse lifestyles. This sociable space is further highlighted by the french doors leading out to the garden, supplying a tasteful flow and further showcasing the ability to entertain all year round.

In summary, Francis Copse presents an exceptional opportunity to embrace a lifestyle of comfort, convenience, and a modern finish in a sought after location. With its versatile living spaces, tasteful finishes, and array of amenities nearby, this property embodies the epitome of contemporary living.

Council Tax band: D

Tenure: Freehold

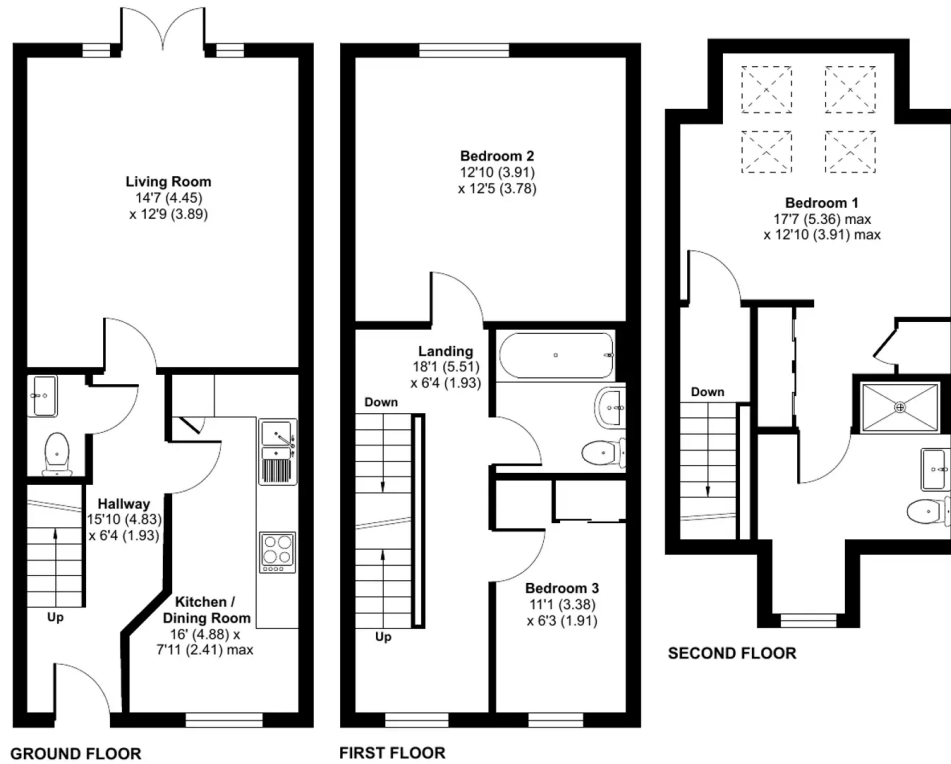
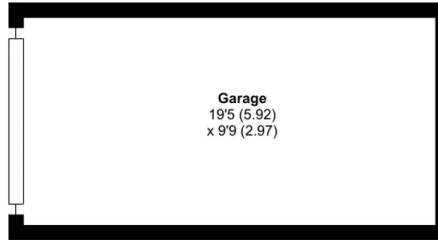
Francis Copse, SO21

Approximate Area = 1092 sq ft / 101.4 sq m

Garage = 192 sq ft / 17.8 sq m

Total = 1284 sq ft / 119.3 sq m

For identification only - Not to scale





Dybles

Unit 4, Black Swan Buildings Southgate Street - SO23 9DT

01962 866644 • winchester@dybles.com • www.dybles.com