



1 Park Avenue, Winchester
Winchester

£1,300 pcm
DYBLES





1 Park Avenue

Winchester, Winchester

This beautifully presented and modern three storey end of terrace property is situated in a highly convenient City Centre location and is in the catchment area for excellent local schools, including St Bede Primary and Westgate All-Through schools.

The large lounge opens onto a fully enclosed courtyard garden, and the modern kitchen is fully equipped with a fridge/freezer, washing machine and a dishwasher. The property also has a useful cloakroom with W.C. and hand basin on the ground floor. Two double bedrooms are located on the top floor and there are two doubles on the first floor, plus a smaller bedroom which can be used as an office or nursery. A large newly fitted bathroom completes the first floor accommodation.

Externally the low maintenance patio garden has rear access there is resident and visitor on street permit parking available to the front.

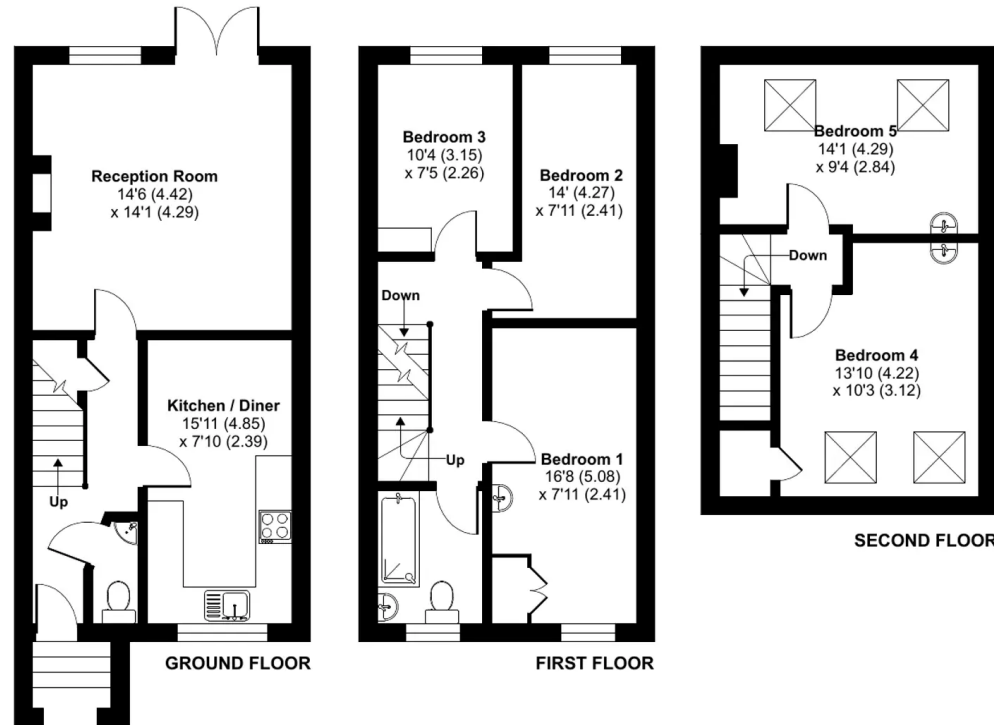
Option to include the bills within the rent for a pre-agreed amount should a tenant wish.

Available now.

Park Avenue, Winchester, SO23

Approximate Area = 1244 sq ft / 115.5 sq m

For identification only - Not to scale





Dybles

Unit 4, Black Swan Buildings Southgate Street - SO23 9DT

01962 866644 • winchester@dybles.com • www.dybles.com