



76 Taplings Road, Winchester
Winchester

DYBLES





Taplings Road

Winchester

An attractive family house superbly positioned on the outskirts of the city within easy reach of the mainline railway station. This property boasts generously proportioned accommodation throughout which has been thoughtfully refurbished throughout and finished with a tasteful contemporary décor.

On the ground floor a useful porch leads to a welcoming entrance hall. At the end of the hall is the modern kitchen. The bright kitchen is well appointed with fitted units providing plenty of cupboard space and a door giving access to a side passage with storage and utility room housing the washing machine. The spacious sitting/dining room has a log burner under the wallpapered chimney breast as a focal point and double patio doors leading out to the garden.

Upstairs on the first floor there are two double bedrooms one with built-in wardrobes. A smart family bathroom with bath and shower completes the first floor accommodation.

On the second floor is another large double bedroom with built in storage and a contemporary en-suite shower room.

The ample rear garden has a good-sized patio with steps down to a lawn then at the very back of the garden is decked area with a custom built wooden gazebo perfect for alfresco dining or entertaining friends and family. The garden can also be accessed via the side passage. There is ample

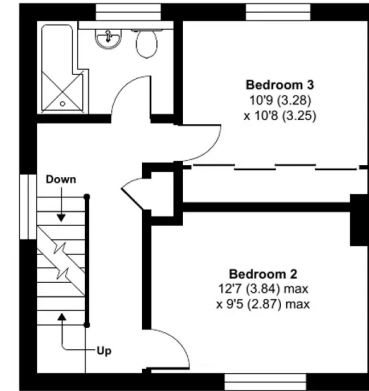
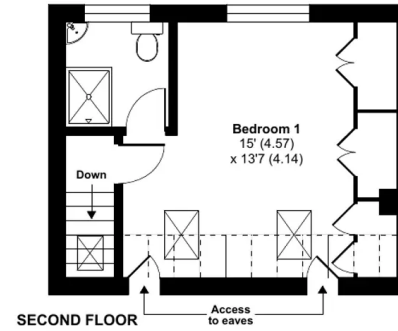
Taplings Road, SO22

Approximate Area = 1243 sq ft / 115.5 sq m

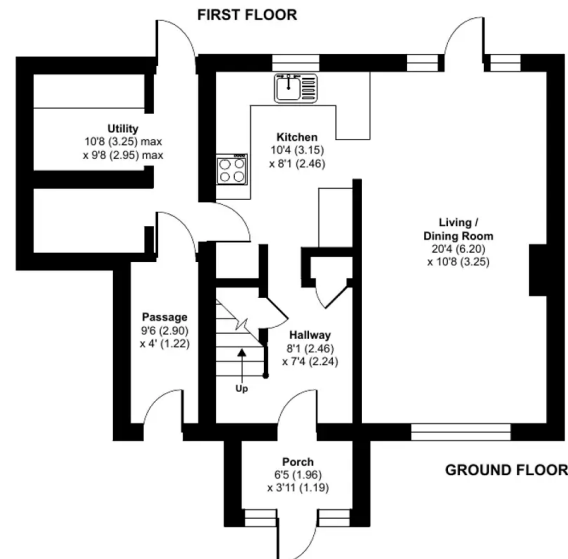
Limited Use Area(s) = 40 sq ft / 3.7 sq m

Total = 1283 sq ft / 119.2 sq m

For identification only - Not to scale



Denotes restricted head height





Dybles

Unit 4, Black Swan Buildings Southgate Street - SO23 9DT

01962 866644 • winchester@dybles.com • www.dybles.com