



Cherry Tree Cottage Queen Street, Twyford
Winchester

Guide Price **£650,000**
DYBLES





Cherry Tree Cottage Queen Street

Twyford, Winchester

Council Tax band: F

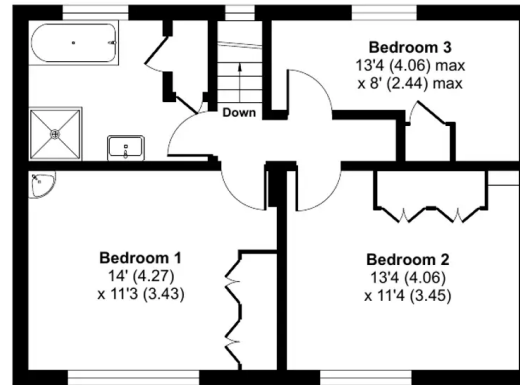
Queen Street, Twyford, Winchester, SO21

Approximate Area = 1389 sq ft / 129 sq m

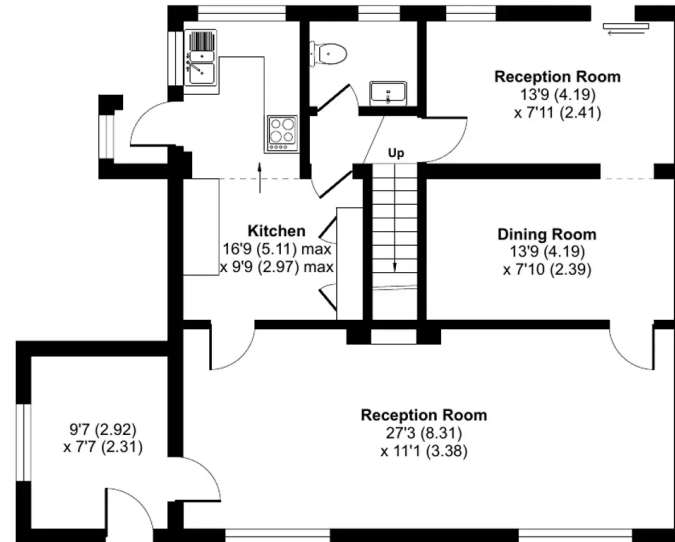
Garage = 196 sq ft / 18.2 sq m

Total = 1585 sq ft / 147.2 sq m

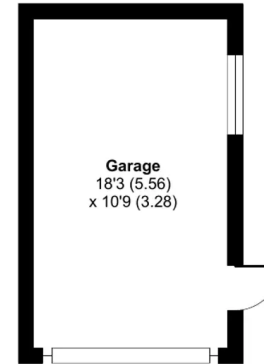
For identification only - Not to scale



FIRST FLOOR



GROUND FLOOR





Dybles

Unit 4, Black Swan Buildings Southgate Street - SO23 9DT

01962 866644 • winchester@dybles.com • www.dybles.com