



**18 Bramshaw Close, Winchester**  
Winchester

In Excess of **£525,000**  
**DYBLES**









## 18 Bramshaw Close

Winchester, Winchester

Council Tax band: D

Tenure: Freehold

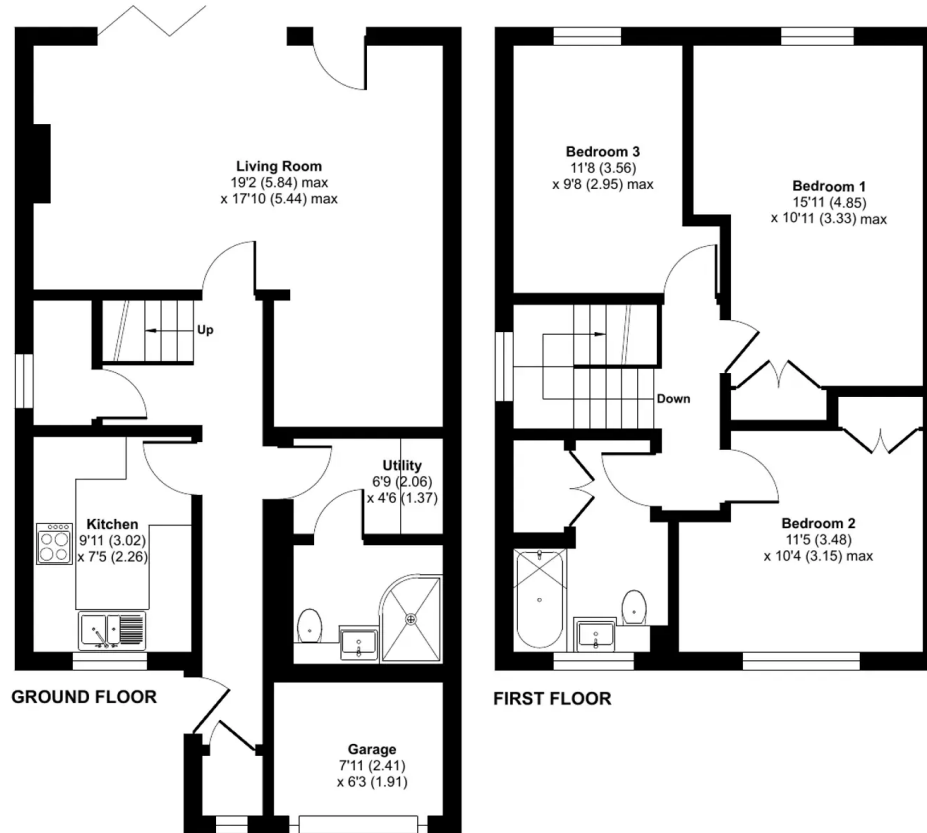
# Bramshaw Close, SO22

Approximate Area = 1113 sq ft / 103.4 sq m

Garage = 49 sq ft / 4.5 sq m

Total = 1162 sq ft / 107.9 sq m

For identification only - Not to scale







## Dybles

Unit 4, Black Swan Buildings Southgate Street - SO23 9DT

01962 866644 • [winchester@dybles.com](mailto:winchester@dybles.com) • [www.dybles.com](http://www.dybles.com)