



120 Gordon Avenue, Winchester
Winchester

Offers in Region of **£315,000**
DYBLES





120 Gordon Avenue

Winchester, Winchester

Dybles are delighted to present this spacious two bedroom semi detached home, located in Highcliffe. This home offers the fantastic benefit of coming with planning permission already in place as well as having no forward chain. This makes it ideal for a quick and seamless transaction.

Upon entry, you're greeted by an entrance space which opens out to a large lounge/dining room equipped with understairs storage. The kitchen is presented to a tasteful standard offering ease to a prospective buyer. The final consistency of the ground floor is an additional reception space which supplies further versatility as a possible bedroom or office/reception space.

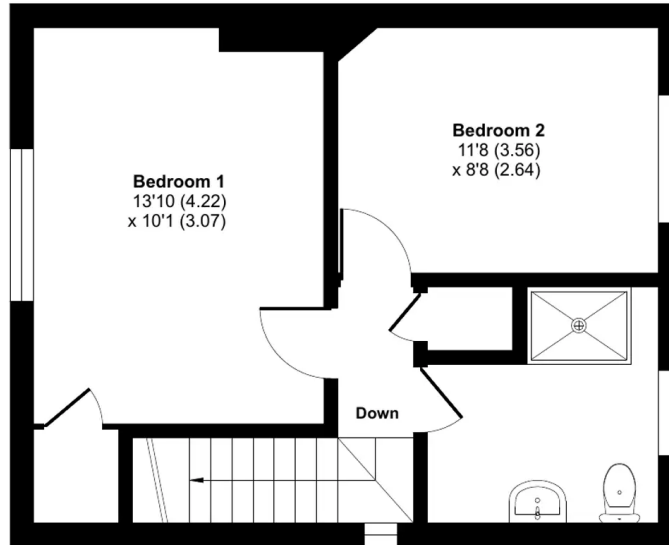
The second floor will not disappoint, consisting of two bedrooms as well as a family bathroom space. Both beds generate strong levels of light as well as comfortable space for a double bed. Externally the home features a generously sized rear garden, side access and a well maintained front lawn. An early viewing is highly advised to avoid disappointment .

Tenure: Freehold

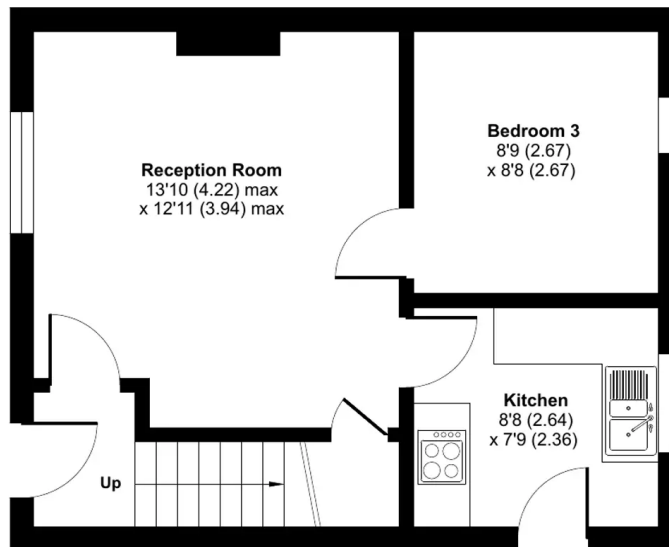
Gordon Avenue, Winchester, SO23

Approximate Area = 772 sq ft / 72 sq m

For identification only - Not to scale



FIRST FLOOR



GROUND FLOOR





Dybles

Unit 4, Black Swan Buildings Southgate Street - SO23 9DT

01962 866644 • winchester@dybles.com • www.dybles.com