



24 Andover Road, Micheldever Station
Winchester

£420,000
DYBLES





24 Andover Road

Micheldever Station, Winchester

Council Tax band: E

Tenure: Freehold

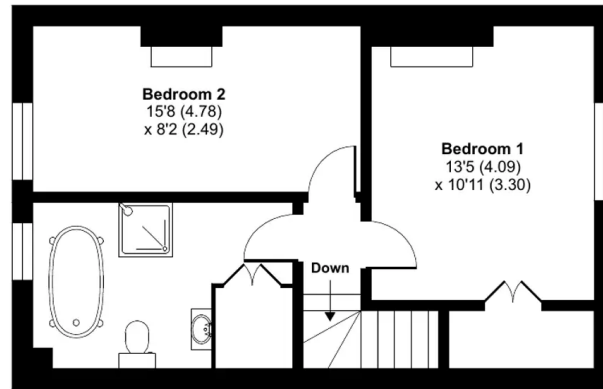
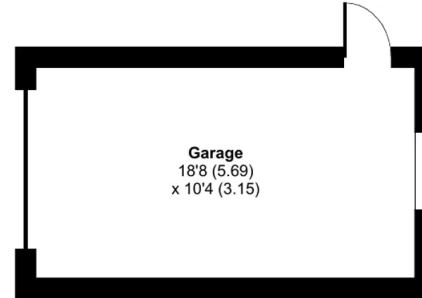
Andover Road, Micheldever Station, Winchester, SO21

Approximate Area = 998 sq ft / 92.7 sq m

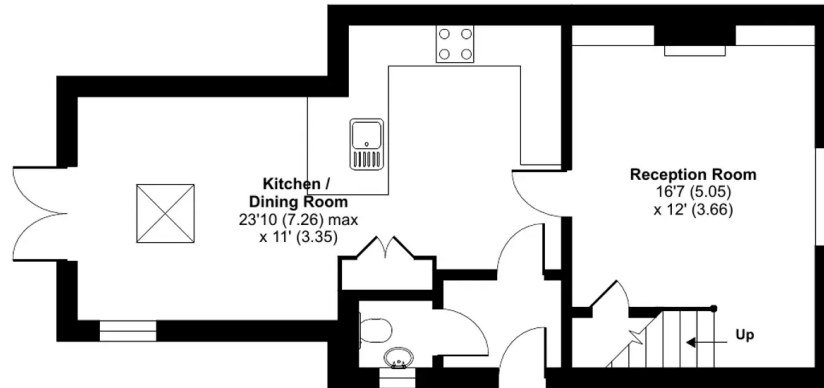
Garage = 192 sq ft / 17.8 sq m

Total = 1190 sq ft / 110.5 sq m

For identification only - Not to scale



FIRST FLOOR



GROUND FLOOR





Dybles

Unit 4, Black Swan Buildings Southgate Street - SO23 9DT

01962 866644 • winchester@dybles.com • www.dybles.com